



CRAFTING THE ROUTE TO EMERGENCY NURSING SPECIALISATION IN INDONESIA

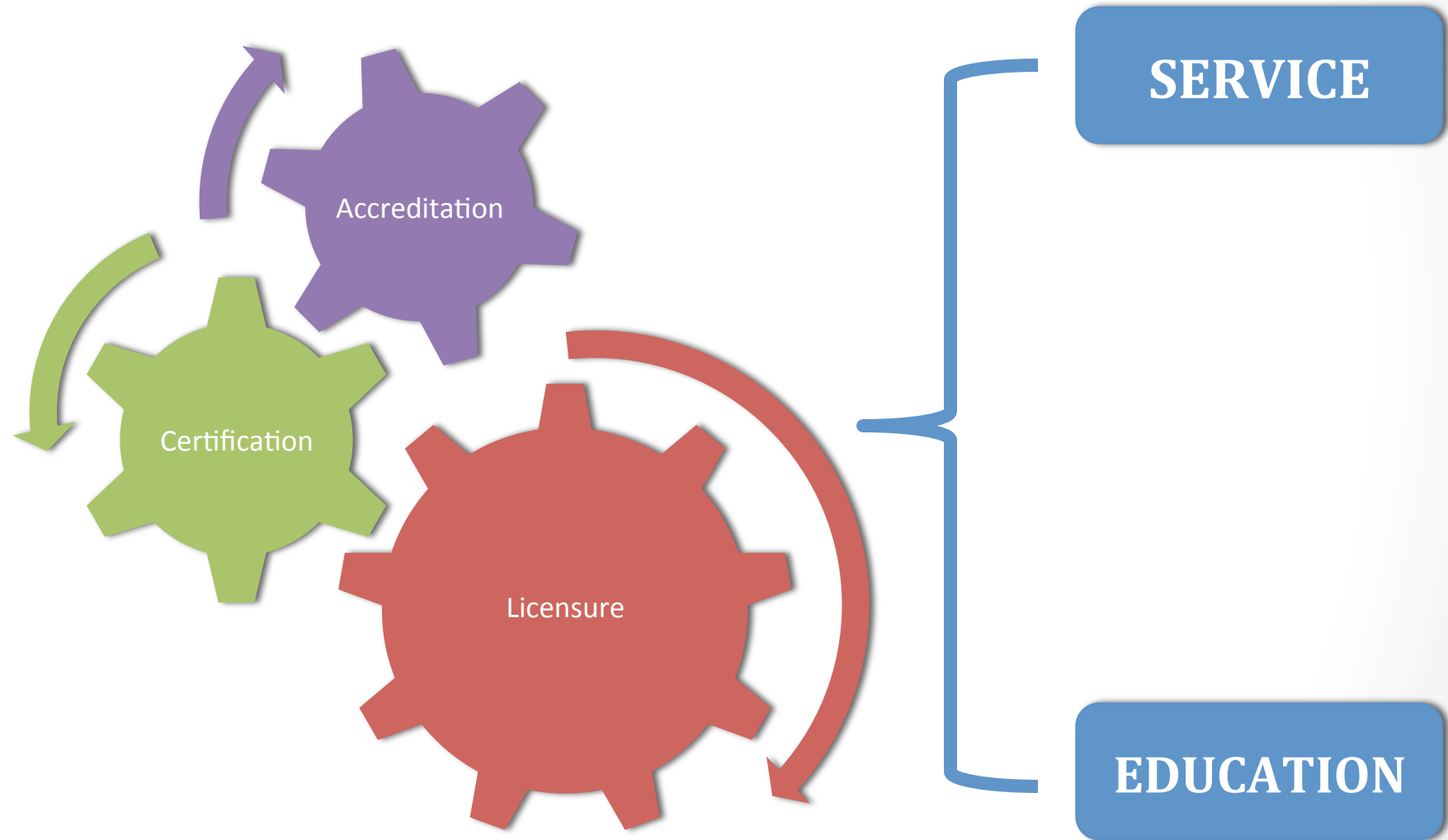
Ns. Arcellia Farosyah Putri, S.Kep., MSc

Indonesian Emergency and Disaster Nurses Association – HQ

BACKGROUND

- Shifting roles
- Complexity of the healthcare system and diseases
- ED Characteristics

EMERGENCY NURSING PROFESION



SERVICE

EDUCATION

REFERENCES

- 1. Nursing act No. 38 year 2014**
- 2. PMK No. 40 year 2017 Nurse's Career Pathway**
- 3. CPD Guideline: Pedoman PKB Perawat Indonesia Edisi 2 Tahun 2016 PP-PPNI**

CONTINUOUS PROFESSIONAL DEVELOPMENT

Emergency Nurses Education and Training

Regulation

1. Standard of Curriculum
2. Standard of Trainer
3. Standard of Learning Facility and Media
4. Standard of Monitoring and evaluation

Standard of Curriculum

NO	TYPES	STATUS
1.	MOT	X
2.	TOT	✓
3.	Basic Life Support	✓
4.	Basic Trauma Cardiac Life Support	✓
5.	Emergency Nursing Basic, Intermediate, Advanced Level	✓
6.	Fluid Resuscitation	✓
7.	Triage Officer	✓
8.	Minor Surgical	✓
9.	Ambulance Nurse	✓
10.	IV Therapy	✓
11.	Disaster Basic Level	✓
12.	Disaster Advanced Level	X

Standard of Trainer

NO	Source Person	Instructor
1.	Min. Bachelor of Nursing (Ners)	Min. Diploma
2.	Clinical experience: min. 5 years	✓
3.	Related training certificate	✓
4.	Updated emergency training certificate min. every 2 years	✓
5.	TOT certificate min. 3 years	✓
6.	NIRA and HIPGABI member	✓

Standard of Learning Facility and Media

Standard of Monitoring and Evaluation

1. Process: facility, facilitator, and learning process
2. Trainee: Learning outcome and competency
3. Assessment process: measure objectivity and assess the quality of competency
4. Certificate of competencies: continue every 6 month or 1 year of a valid certification

Standard of Monitoring and Evaluation

Emergency Nursing – Basic Level

NO	COURSE CONTENT	TIME				Q
		T	P	PL	SUM	%
1	FUNDAMENTAL					
	a. Policy and regulation towards ENP	2	0	0	2	4%
	b. Continous professional development	1	1	0	2	4%
	c. Emergency nursing concept	2	0	0	2	4%
2	CORE					
	a. Emergency nursing care plan (ENCP)	1	3	0	4	9%
	b. Initial assesment	1	3	0	4	9%
	c. Airway & breathing management	1	2	0	3	6%
	d. Basic Life Support	2	6	0	8	17%
	e. ENCP: Hypovolemic shock	2	2	0	4	9%
	f. ENCP: ACS	2	3	0	5	10%
	g. ENCP: Trauma	5	8	0	13	28%
	Total Credit	19	28	0	47	100%

Standard of Monitoring and Evaluation

Emergency Nursing – Basic Level

CORE 2 (INITIAL ASSESMENT)

- Learning objective :
 - Explain how to perform initial assesment
 - Identify problems in ABCDE
 - Perform initial assesment

Standard of Monitoring and Evaluation

Emergency Nursing – Basic Level

Example

Seorang laki-laki berusia 30 tahun diantar ke UGD dengan hasil foto thorak menunjukkan *tension pneumothorax*. Pasien mengeluh sesak napas, menggunakan otot bantu napas, dan frekuensi napas 35 x/menit dangkal, trakea terdorong ke arah yang sehat.

Apakah tindakan emergensi pada pasien?

CERTIFICATION SYSTEM

		Credential Link	Quality
Career Pathway	Competency standard/ certification	Competency- authority – portfolio	Quality Standard of ENCP
PK 1		<ol style="list-style-type: none"> 1. Certification and assessment 2. Credential of clinical authority system: directed, supervised, and independent 3. Clinical authority and portfolio 	
PK 2	EN Basic		
PK 3	EN Intermediate		
PK 4	EN Advanced/ Specialist		
PK 5	EN Specialist / Consultant		

CERTIFICATION SYSTEM

Pathway: Certification Process

Career Pathway	Competency	Process	Certification
PK I (Intern) 0 – 4 (D3) 0 – 2 (S1)	Novice	LOG BOOK PK I	
	Beginner	3 Months internship → competency assessment and certification for EN Basic	<ol style="list-style-type: none">1. ENBL2. Ethics and legal ENP3. Therapeutic communication

CERTIFICATION SYSTEM

Pathway: Certification Process

Career Pathway	Competency	Process	Certification
PK II	EN Basic 1 (Clinical authority: supervised)	<ol style="list-style-type: none">3 Months internship → competency assessment and certification for EN Basic (internal/external) → assessment BASIC (HIPGABI)Begin credential PK II	<ol style="list-style-type: none">TEAM WORKNEWS and data analysis in EDEmergency nursing care plan

CERTIFICATION SYSTEM

Pathway: Certification Process

Career Pathway	Competency	Process	Certification
PK II	EN BASIC 2 (Clinical authority: independent)	<ol style="list-style-type: none">1. Clinical authority and assignment: intermediate2. Competency assessment: intermediate3. Competency certification: intermediate	<ol style="list-style-type: none">1. EN INTERMEDIATE2. BASIC SURGICAL SKILL3. IV THERAPY/ FLUID RESUSCITATION

CERTIFICATION SYSTEM

Pathway: Certification Process

Career Pathway	Competency	Process	Certification
PK III	INTERMEDIATE 1 (Clinical authority: independent)	<ol style="list-style-type: none">1 Months intermediate internship → competency assessment and certification for intermediate level → intermediate certification: HIPGABIBegin credential PK III	CNE <ol style="list-style-type: none">ENILTRIAGE OFFICERCI in EDED and disaster management

CERTIFICATION SYSTEM

Pathway: Certification Process

Career Pathway	Competency	Process	Certification
PK III	INTERMEDIATE 2 (Clinical authority: independent)	<ol style="list-style-type: none">1. Clinical authority and assignment: advanced2. Competency assessment: advanced3. Competency certification: advanced4. CNE intermediate	<ol style="list-style-type: none">1. ADVANCED EN CARDIO2. ADVANCED EN NEURO3. ADVANCED EN TRAUMA4. ADVANCED EN PD5. ADVANCED EN PEDIATRIK6. MANAGEMENT BENCANA7. PENGEMBANGAN RISET

CERTIFICATION SYSTEM

Pathway: Certification Process

Career Pathway	Competency	Process	Certification
PK IV	ADVANCED	SP 1 GADAR	CNE for ADVANCED SPECIALIST (COLLEGIUM)
PK V	CONSULTANT	SP 2 GADAR	1. SPECIALIST (COLLEGIUM) 2. DOCTORAL (COLLEGIUM)

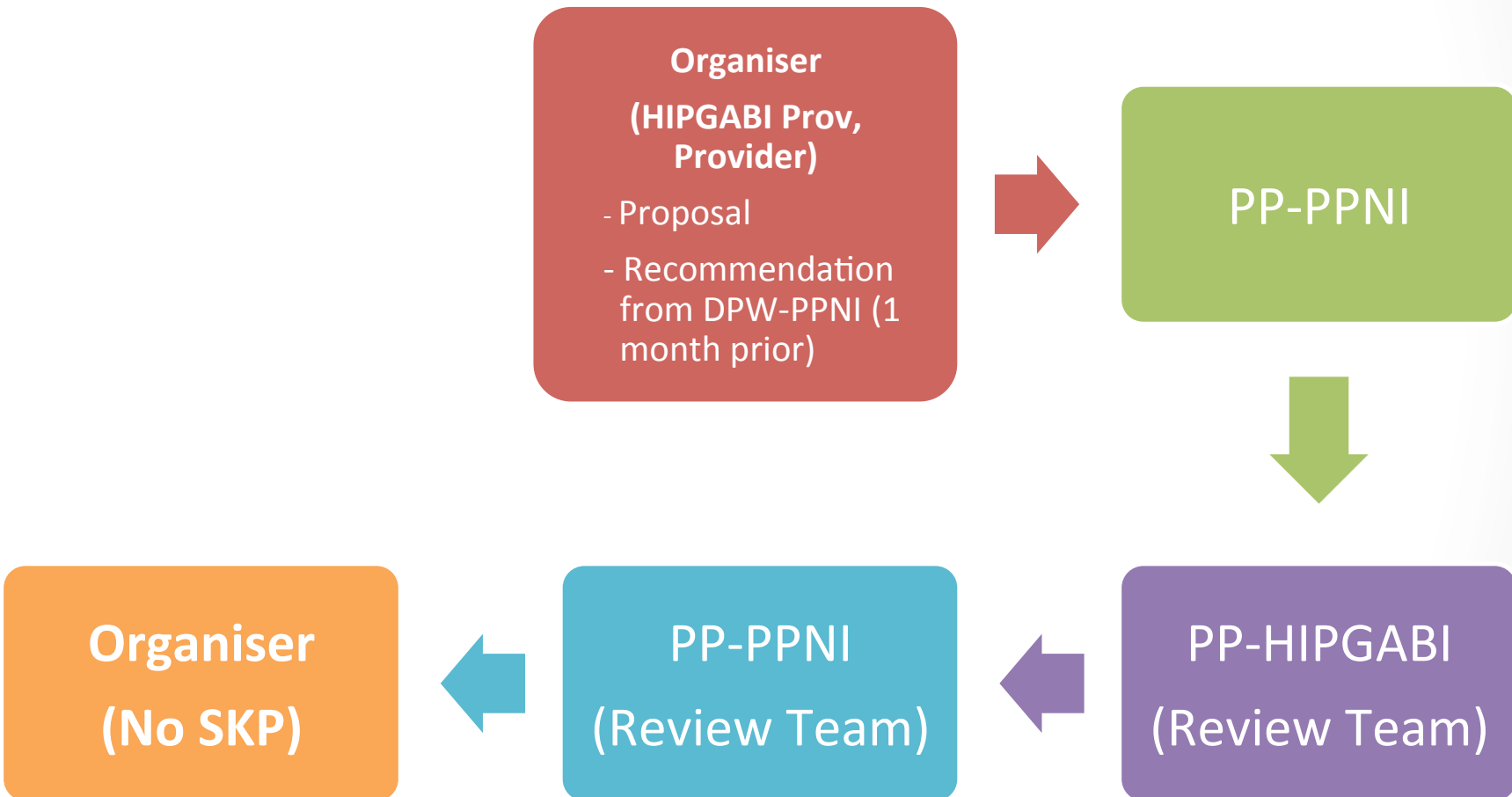
CERTIFICATION SYSTEM

PP-PPNI ISSUES

1. Certificate of attendance
2. Certificate of competence
3. Letter of recognition → surat keterangan pengakuan lembaga: provider pelatihan

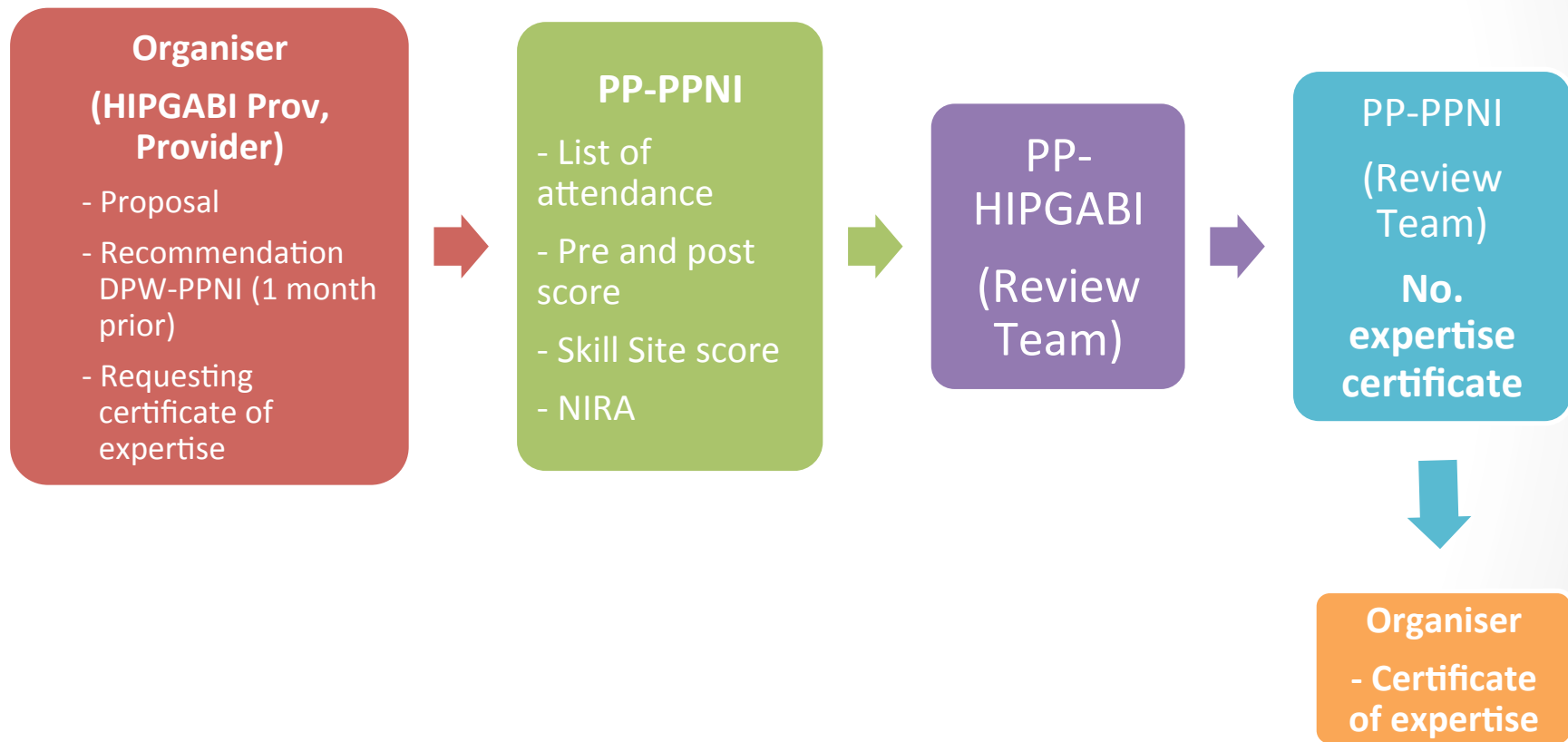
CERTIFICATION SYSTEM

Pathway: Requesting Nurse Credit Point (SKP)



CERTIFICATION SYSTEM

Pathway: Requesting certificate of competence



EMERGENCY NURSING SPECIALIST PROGRAMME

COLLEGIUM

Nurse Specialist Competency

Revision: 2017

(5 Domains of the ASEAN Nursing Common Core Competencies)

1. Ethic and legal practice
2. **Professional Nursing Practice**
3. Leadership and Management
4. Education and Research
5. Professional, Personal, and Quality Development

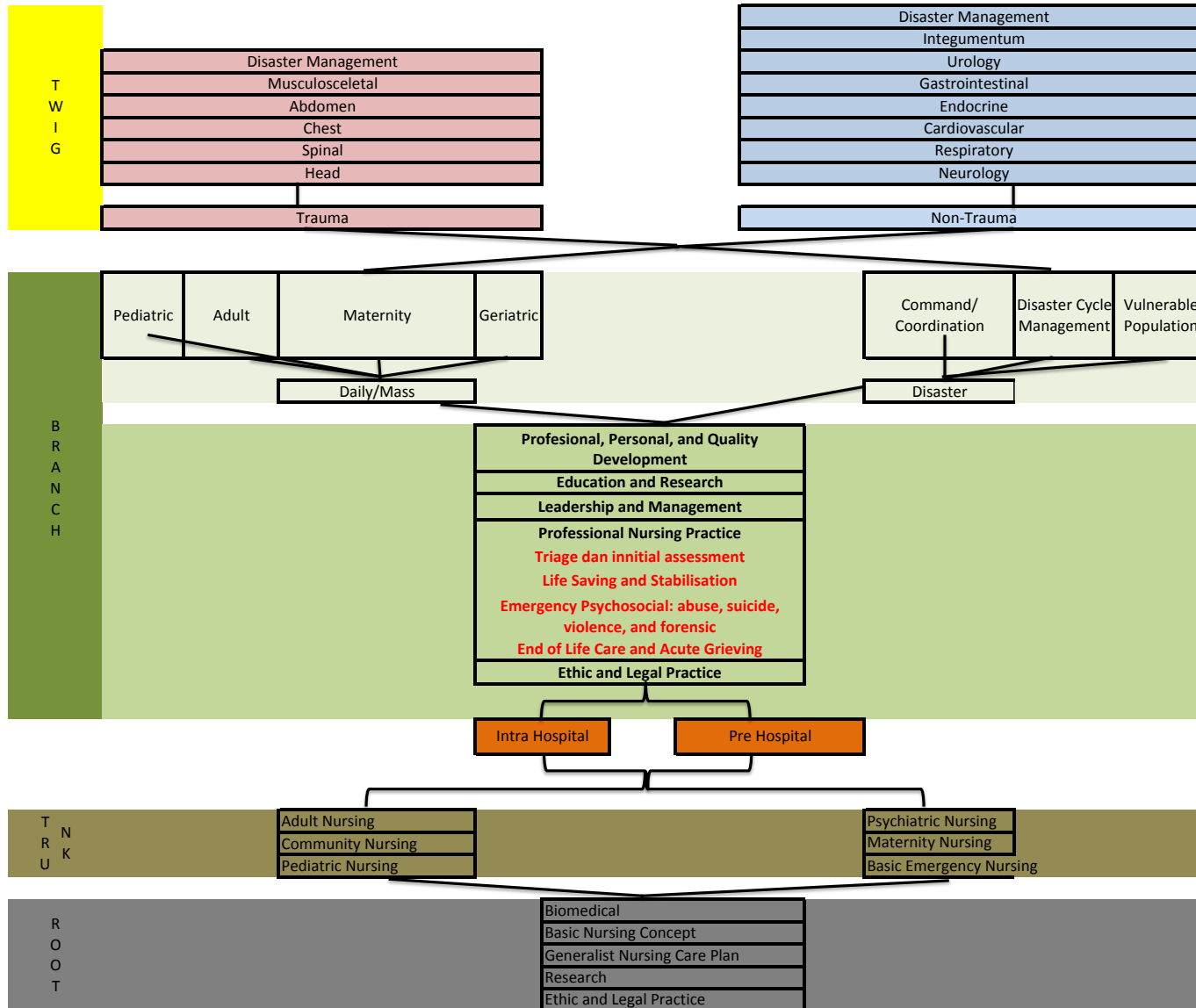
COLLEGIUM

Nurse Specialist Competency

Professional Emergency Nursing Practice

1. Triage and Initial Assessment
2. Life saving and stabilisation
3. Psychosocial emergency: abuse, suicide, violence, and forensic
4. End of life care and acute grieving

THE TREE OF KNOWLEDGE





TERIMA KASIH